



**India Meteorological Department
(Ministry of Earth Sciences)**

NATIONAL BULLETIN NO. 8 (LAND/01/2024)

TIME OF ISSUE: 0830 HOURS IST

DATED:04.08.2024

FROM: INDIA METEOROLOGICAL DEPARTMENT (FAX NO. 24643965/24699216/24623220)

TO: CONTROL ROOM, NDM, MINISTRY OF HOME AFFAIRS (FAX.NO. 23093750)

CONTROL ROOM NDMA (FAX.NO. 26701729)

CABINET SECRETARIAT (FAX.NO.23012284, 23018638)

PS TO HON'BLE MINISTER FOR S & T AND EARTH SCIENCES (FAX NO.23316745)

SECRETARY, MOES (FAX NO. 24629777)

H.Q. (INTEGRATED DEFENCE STAFF AND CDS) (FAX NO. 23005137/23005147)

DIRECTOR GENERAL, DOORDARSHAN (23385843)

DIRECTOR GENERAL, AIR (23421105, 23421219)

PIB MOES (FAX NO. 23389042)

UNI (FAX NO. 23355841)

D.G. NATIONAL DISASTER RESPONSE FORCE (NDRF) (FAX NO. 26105912, 2436 3260)

DIRECTOR, PUNCTUALITY, INDIAN RAILWAYS (FAX NO. 23388503)

CHIEF SECRETARY, WEST BENGAL (FAX NO. 033-22144328)

CHIEF SECRETARY, JHARKHAND (FAX NO. 0651-2400255)

CHIEF SECRETARY, CHHATTISGARH (FAX NO. 0771-2221206)

CHIEF SECRETARY, BIHAR (FAX NO. 0612-2217085)

CHIEF SECRETARY, MADHYA PRADESH (FAX NO. 0755-2441076)

CHIEF SECRETARY, UTTAR PRADESH (FAX NO.0522-2239283)

CHIEF SECRETARY, RAJASHTHAN (FAX NO. 0141-2227114)

CHIEF SECRETARY, GUJARAT (FAX NO. 079-23250305)

**Sub: (A) Deep Depression over northeast Madhya Pradesh and neighbourhood
(B) Low Pressure Area over West Rajasthan & adjoining Pakistan**

(A) Deep Depression over northeast Madhya Pradesh and neighbourhood

The deep depression over northeast Madhya Pradesh and neighbourhood moved westwards with a speed of 07 kmph during past 6 hours and lay centered at 0530 hours IST of today, the 4th August over the same region near latitude 24.9°N and longitude 81.0°E, about 40 km north-northeast of Satna (Madhya Pradesh), 100 km northwest of Sidhi (Madhya Pradesh) and 110 km east of Khajuraho (Madhya Pradesh).

It is likely to continue to move west-northwestwards across north Madhya Pradesh and adjoining Uttar Pradesh and weaken gradually into a depression during next 12 hours.

(B) Low Pressure Area over West Rajasthan and adjoining Pakistan

The low pressure area over West Rajasthan and adjoining Pakistan persisted over the same region at 0530 hours IST of today, the 4th August, 2024. It is likely to move nearly westwards during next 12 hours.

Warnings:

(i) Rainfall Warning:

Jharkhand:

Light to moderate rainfall at most places with **heavy rainfall** at isolated places on 4th August.

Bihar:

Light to moderate rainfall at most places with **heavy rainfall** at isolated places on 4th August.

Chhattisgarh:

Light to moderate rainfall at most places with **heavy rainfall** at isolated places on 4th August.

East Madhya Pradesh:

Heavy to very heavy rainfall at a few places with extremely heavy rainfall at isolated places very likely on 4th August and heavy to very heavy rainfall at isolated places on 5th August.

West Madhya Pradesh:

Heavy to very heavy rainfall at a few places with extremely heavy rainfall at isolated places very likely on 4th August and heavy to very heavy rainfall at isolated places on 5th August.

East Uttar Pradesh:

Light to moderate rainfall at many places with **heavy to very heavy rainfall** at isolated places on 4th August.

West Uttar Pradesh:

Light to moderate rainfall at many places with **heavy to very heavy rainfall** at isolated places on 4th August.

Maharashtra:

Light to moderate rainfall at many places with **heavy to very heavy rainfall** at isolated places very likely over Vidarbha, Madhya Maharashtra, Marathwada and Konkan & Goa on 4th and 5th August.

East Rajasthan:

Light to moderate rainfall at most places with **heavy to very heavy & extremely heavy rainfall** at isolated places on 4th August. Isolated heavy rainfall is very likely at isolated places during 5th-6th August.

West Rajasthan:

Light to moderate rainfall at most places with **heavy to very heavy rainfall** at isolated places very likely during 4th and 5th August

Gujarat region:

Light to moderate rainfall at most places with heavy to very heavy rainfall at isolated places on 4th and 5th August.

Saurashtra & Kutch:

Light to moderate rainfall at most places with heavy to very heavy rainfall at isolated places on 4th and 5th August.

(ii) Wind warning:

- Strong wind speed reaching 40-50 kmph gusting to 60 kmph is very likely over north Madhya Pradesh and adjoining Uttar Pradesh during next 12 hours and gradually decrease thereafter.
- Strong wind speed reaching 35-45 kmph gusting to 55 kmph is very likely over West Madhya Pradesh and adjoining East Rajasthan & West Uttar Pradesh on 5th August.

(iii) Impact Expected

- Localized Flooding of roads, water logging in low lying areas and closure of underpasses mainly in urban areas of the above region.
- Occasional reduction in visibility due to heavy rainfall.
- Disruption of traffic in major cities due to water logging in roads leading to increased travel time.
- Minor damage to kutchha roads.
- Possibilities of damage to vulnerable structure.
- Localized Landslides/Mudslides/landslips/mud slips/land sinks/mud sinks.
- Damage to horticulture and standing crops in some areas due to inundation.
- It may lead to riverine flooding in some river catchments (for riverine flooding please visit Web page of CWC)

(iv) Action Suggested

- Check for traffic congestion on your route before leaving for your destination.
- Follow any traffic advisories that are issued in this regard.
- Avoid going to areas that face the water logging problems often.
- Avoid staying in vulnerable structure.

(v) Agromet advisories for Heavy Rainfall likely over various parts of the country

- Make provision for draining out excess water from crop fields to avoid water stagnation in West Bengal, Sub Himalayan West Bengal, Odisha, Jharkhand, Bihar, Rajasthan, Madhya Pradesh, Chhattisgarh.
- Provide mechanical support to horticultural crops and staking to vegetables.

Next bulletin will be issued at 1130 hours IST of today, the 4th August, 2024.

(Shibin Balakrishnan)
Scientist-D, Cyclone Warning Division, New Delhi

Copy to: ACWC Kolkata/RMC, New Delhi/RMC, Nagpur/MC, Ranch/MC, Raipur/MC, Patna/MC, Bhopal/MC, Jaipur/CWC Bhubaneswar/MC, Lucknow

Realized Rainfall during past 24 hours ending at 0830 hours IST of 03rd August, 2024

Gangetic West Bengal

Dum Dum (North - 24 Panas) - 10, Mo Salt lake(North - 24 Panas) - 8, Diamond Harbour (South - 24 Panas) - 8, Burnpur(Paschim Bardhaman) - 8, Asansol (Paschim Bardhaman) - 8, Rajnagar (Birbhum) - 7

Sub Himalayan West Bengal

Buxaduar(Alipurduar) - 7

Bihar

Puraini(Madhepura) - 11, Sherghati(Gaya) - 9, Dobhi(Gaya) - 8, Imamganj(Gaya) - 8, UdaiKishanganj(Madhepura) - 7, Kumarkhand(Madhepura) - 7, Barachatti(Gaya) - 7, Banka (Banka) - 7, Rajauli(Nawada) - 7, Chausa(Madhepura) - 7, Deo (Aurangabad) - 7

Jharkhand

Mandu(Ramgarh) - 27, Ramgarh (Ramgarh) - 27, BauKanke(Ranchi) - 26, PurviTundi(Dhanbad) - 24, Hendigir(Hazaribag) - 21, Koner(Hazaribag) - 19, Bokaro Thermal (Bokaro) - 17, Ranchi Aero (Ranchi) - 17, Ormanjhi(Ranchi) - 17, Papunki(Dhanbad) - 16, Ramgarh (Ramgarh) - 16, IcarNamkum(Ranchi) - 15, Rajdhanwar(Giridih) - 14, Balumath(Latehar) - 14, Putki(Dhanbad) - 13, Barkisuriya(Giridih) - 13, Bhurkunda(Ramgarh) - 13, Tenughat(Bokaro) - 13, Maithon(Dhanbad) - 13, ManduDvc(Ramgarh) - 13, Gobindpur(Dhanbad) - 12, Tilaiya(Koderma) - 12, Giridih(Giridih) - 12, Bandgaon(West Singbhum) - 12, Sisai(Gumla) - 12, JamtaraFmo(Jamtara) - 12, Kuru (Lohardaga) - 11, Dumri(Giridih) - 11, Panchet(Dhanbad) - 11, Tundi(Dhanbad) - 11, DiyakelKhunti(Khunti) - 11, Chandwa(Latehar) - 11, Raidih(Gumla) - 11, Dhurki(Garhwa) - 10, Daltonganj(Palamu) - 10, Rajmahal(Sahibganj) - 10, Murhu(Khunti) - 9, Lesliganj(Palamu) - 9, Markachou(Koderma) - 9, Torpa(Khunti) - 9, Maharo(Dumka) - 9, Latehar(Latehar) - 9, PalamuDtg(Palamu) - 9, Bharno(Gumla) - 9, Koderma(Koderma) - 9, LateharBalumat(Latehar) - 9, Patratu(Ramgarh) - 9, Ramgarh(bdo) (Ramgarh) - 8, Rania (Khunti) - 8, Messenjoy(Dumka) - 8, Nawa Bazar (Palamu) - 8, Arki(Khunti) - 8, Nandadih(Giridih) - 8, Mohanpur(Deoghar) - 8, Garu(Latehar) - 8, Barkagaon(Hazaribag) - 7, Gola (Ramgarh) - 7, Simdega(Simdega) - 7, Amrapara(Pakur) - 7

East Rajasthan

Masuda Sr (Ajmer) - 18, Nayanagar/beawar(Ajmer) - 17, Pisagan Sr (Ajmer) - 17, Mangliawas Sr (Ajmer) - 15, Bhim(Rajsamand) - 15, Tatgarh Sr (Ajmer) - 13, Deogarh(Rajsamand) - 10, Mounntabu Tehsil Sr (Sirohi) - 9, Begu Sr (Chittorgarh) - 9, Pushkar Sr (Ajmer) - 8, Raipur (Bhilwara) - 7, Hurda Sr (Bhilwara) - 7, Mounnt Abu (Sirohi) - 7, Sangod(Kota) - 7

Chhattisgarh

Shankarh(Balrampur) - 21, Kusmi(Balrampur) - 18, Rajpur(Balrampur) - 16, Odagi(Surajpur) - 13, Ramanujganj(Balrampur) - 12, Pratappur(Surajpur) - 12, Samari(Balrampur) - 12, Chando(Balrampur) - 12, Raghunath Nagar (Balrampur) - 11, Bhanupratappur(Kanker) - 10, Balrampur(Balrampur) - 10, Wandrafnagar(Balrampur) - 10, DouraKochali(Balrampur) - 10, Bhatgaon(Surajpur) - 9, Kelhari(ManendragarhBharatpur) - 9, Janakpur Bharatpur(ManendragarhBharatpur) - 9, Chalgali(Balrampur) - 9, Durg(Durg) - 8, Biharpur(Surajpur) - 8, Kutaru(Bijapur) - 8, Bhairamgarh(Bijapur) - 8, Sonhat(Koriya) - 8,

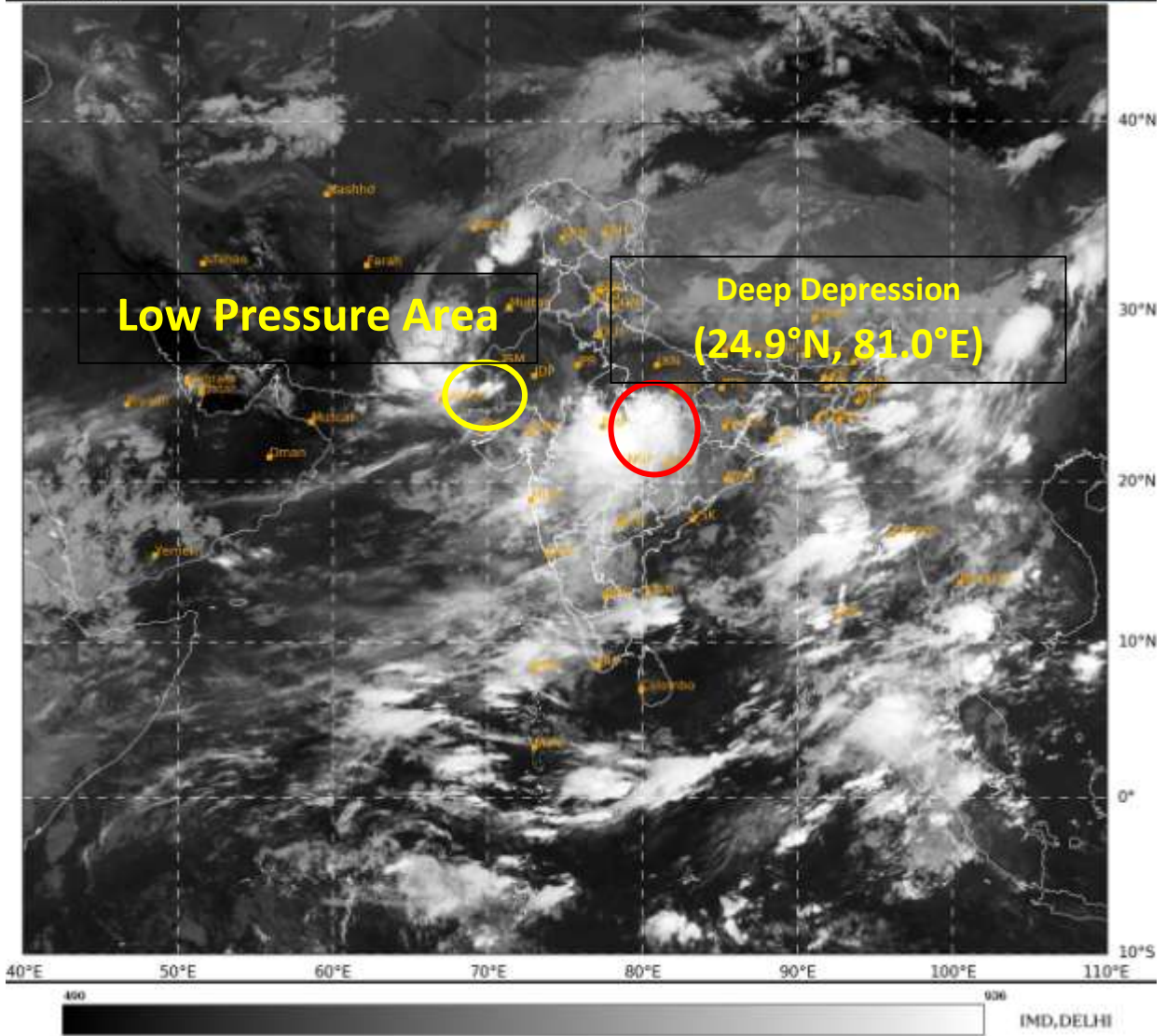
Durgkondal(Kanker) - 8, Kotadol(ManendragarhBharatpur) - 7, Manora(Jashpur) - 7, Latori(Surajpur) - 7, Bhaiyathan(Surajpur) - 7, Pakhanjur(Kanker) - 7, Kunkuri(Jashpur) - 7, Lundra(Surguja) – 7

East Madhya Pradesh

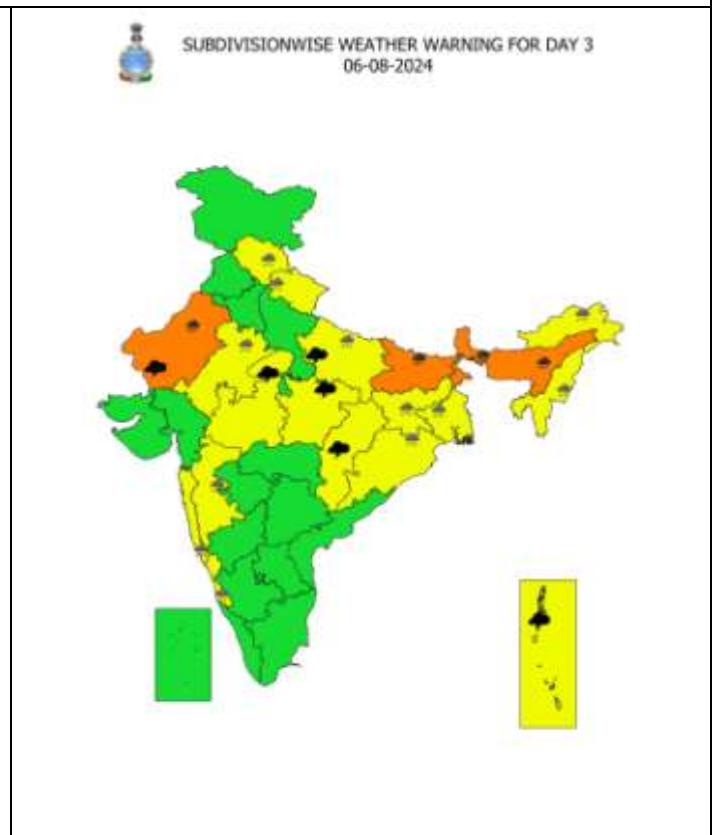
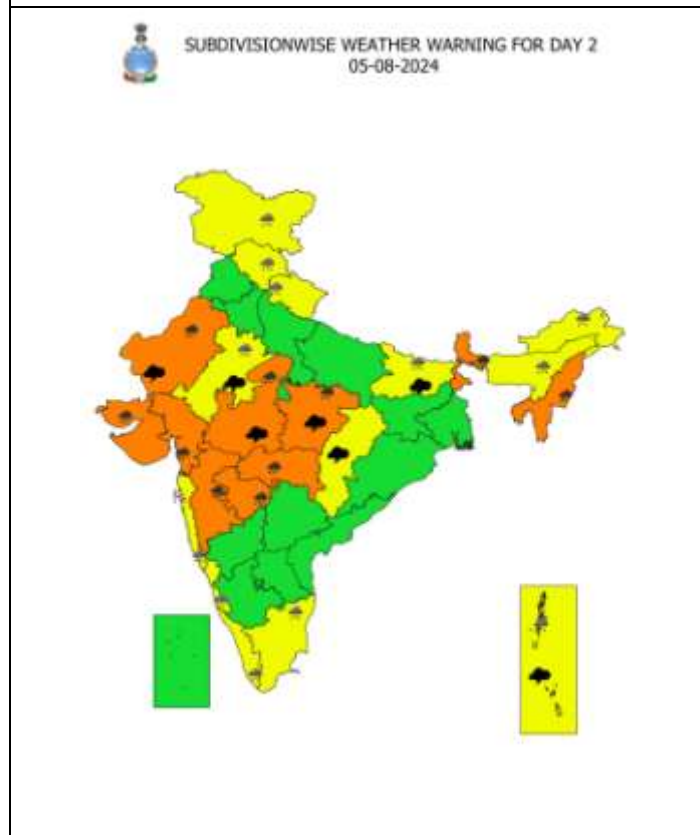
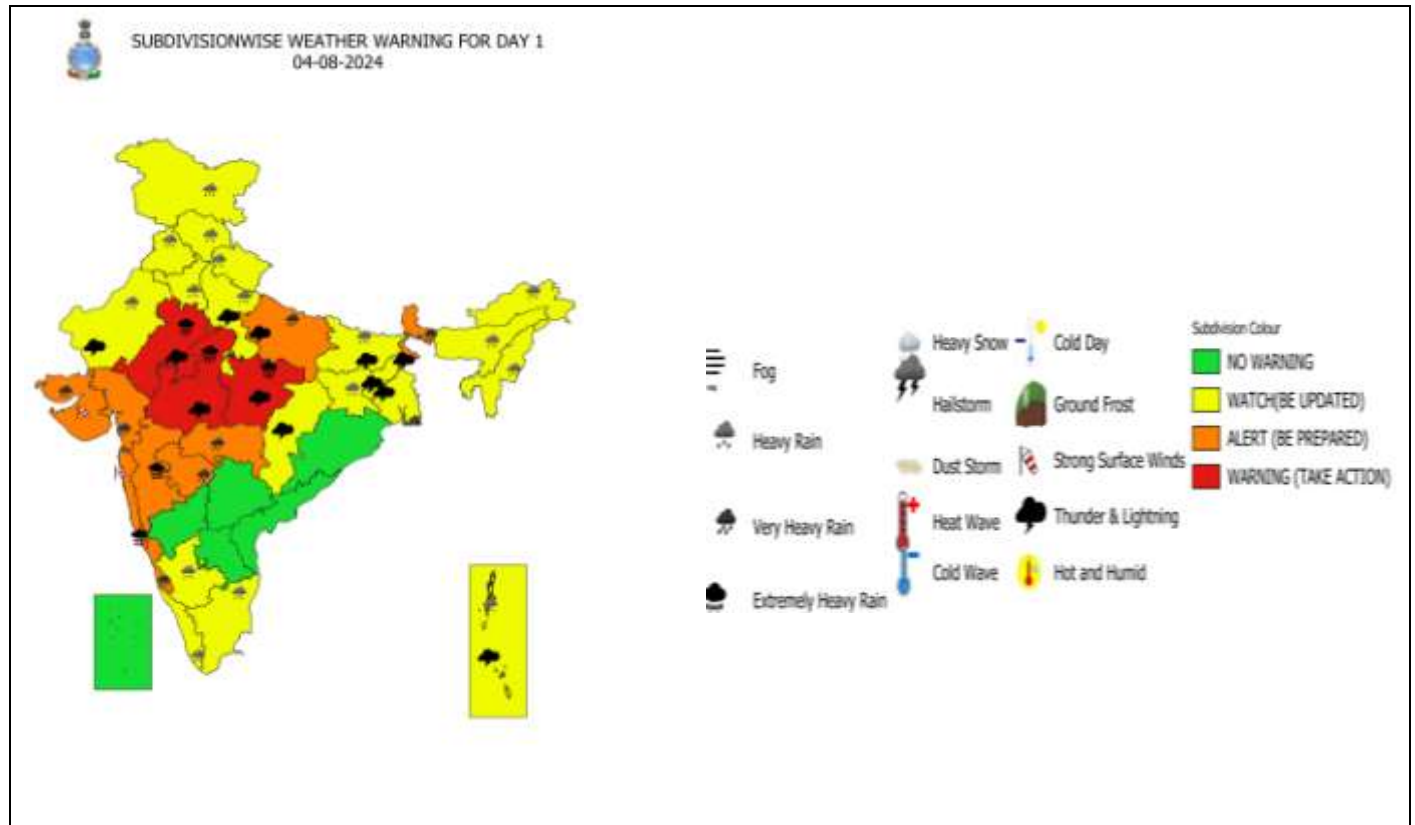
Amarpatan(Satna) - 9, Ramnagar(Satna) - 9, Matiyari(Mandla) - 9, Jaisingh Nagar (Shahdol) - 8, Barhi(Katni) - 7, Khurai(Sagar) - 7, Venkatnagar(Anuppur) - 7, Sarai (Singrauli) - 7, Nagode(Satna) - 7, Jaitpur(Shahdol) – 7

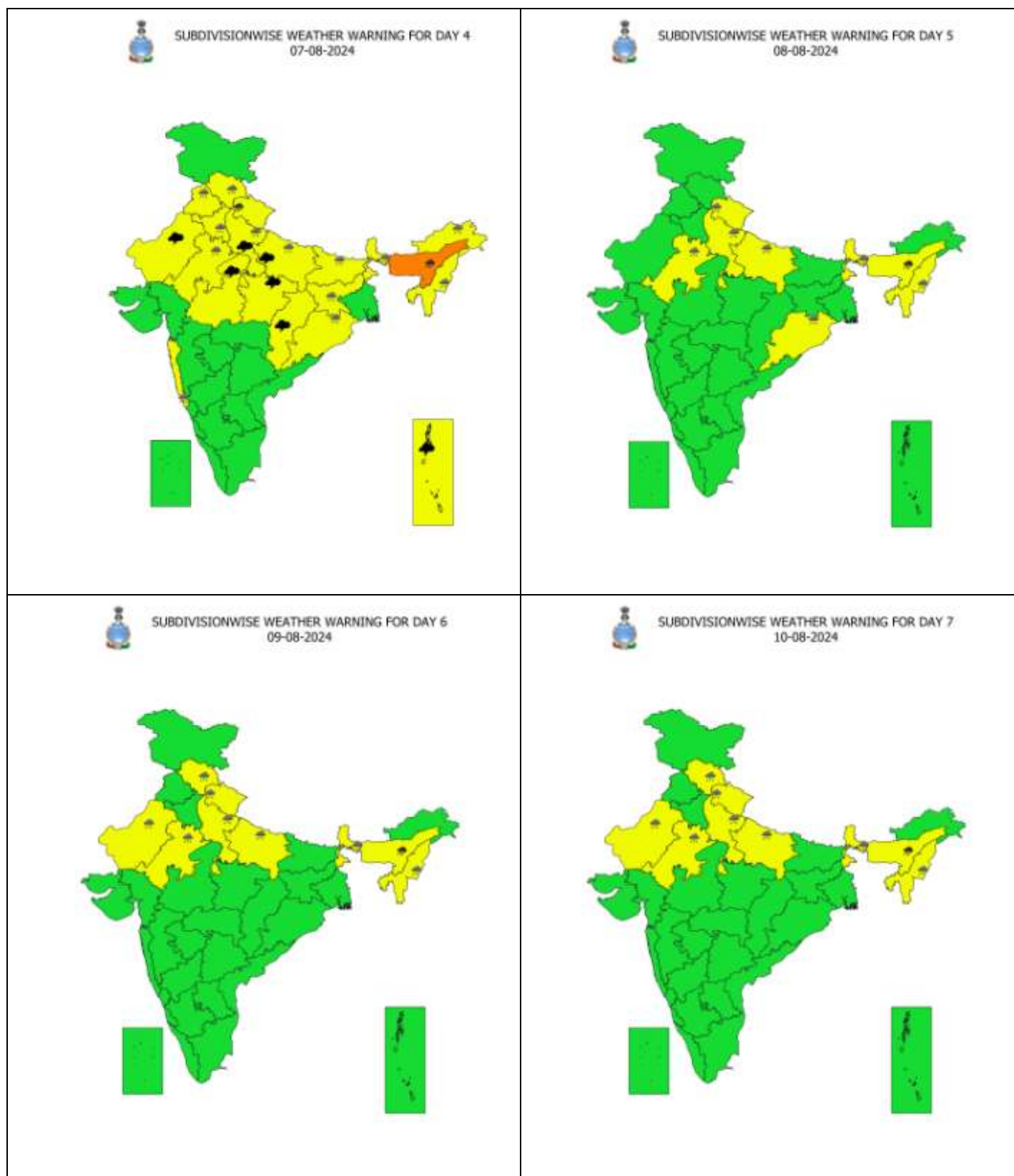
West Madhya Pradesh

Biaora(Rajgarh) - 12, Sultanpur (Raisen) - 11, Harda(Harda) - 11, Raisen- (Raisen) - 9, Gairatgang(Raisen) - 8, Bareli (Raisen) - 8, Sehore- (Sehore) - 7, Udaipura(Raisen) - 7, Badi(Raisen) - 7, Shamshabad(Vidisha) - 7, Berasia(Bhopal) - 7, Ganjbasoda(Vidisha) - 7



Warning Graphics





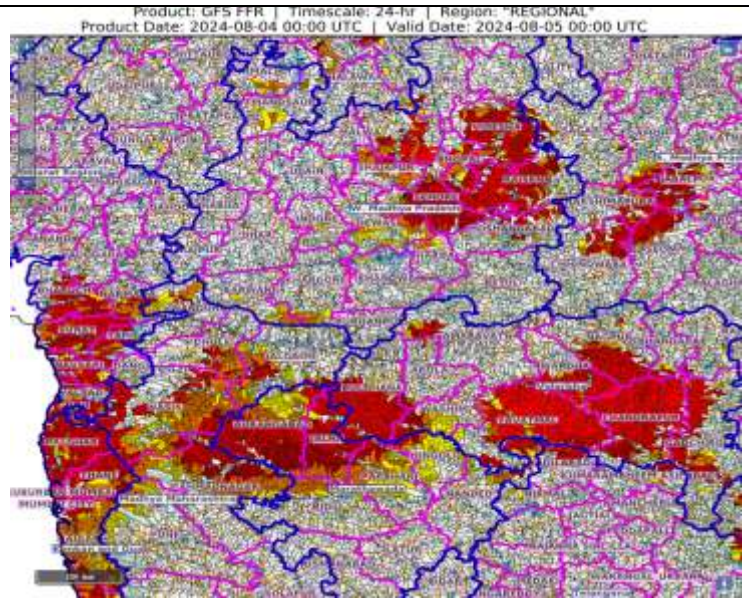
- Action may be taken based on **ORANGE AND RED** COLOUR warnings.
- Vulnerable regions likely urban and hilly areas action may be initiated for heavy rainfall warning.
- As the lead period increases forecast accuracy decreases.

Flash Flood Guidance

24 hours Outlook for the Flash Flood Risk (FFR) till 0530 IST of 05-08-2024 :

Low to Moderate flash flood risk likely over few watersheds & neighbourhoods of Western parts of East Madhya Pradesh, West Madhya Pradesh, Vidarbha, Marathawada, North Madhya Maharashtra, South Gujarat Region and North Konkan & GoaMet Sub-divisions during next 24 hours.

Surface runoff/ Inundation may occur at some fully saturated soils & low-lying areas over AoC as shown in map due to expected rainfall occurrence in next 24 hours.



Flash Flood Risk

 **High Risk (Take Action)**

 **Moderate Risk (Be Prepared)**

 **Low Risk (Be Updated)**